

# RUBIX

## Rubix Group

### Organisational GHG Footprint Report 2019 for Walker Guidelines



June 2020

# Table of Contents

Introduction	3
Analysis	4
1. Results	4
2. Year-on-Year Analysis	5

[www.eco-act.com](http://www.eco-act.com)

Company registered in England. No 557 5619

Carbon Clear Limited trading as EcoAct

Registered Office: Unit A, 70-78 York Way, London N1 9AG

## Copyright and Non-Disclosure Notice

The contents and layout of this report are subject to copyright owned by © EcoAct 2018. To the extent that we own the copyright in this report, it may not be copied or used without our prior written agreement for any purpose other than the purpose indicated in this report.

The methodology (if any) contained in this report is provided to you in confidence and must not be disclosed or copied to third parties without the prior written agreement of EcoAct. Disclosure of that information may constitute an actionable breach of confidence or may otherwise prejudice our commercial interests. Any third party who obtains access to this report by any means will, in any event, be subject to the Third-Party Disclaimer set out below.

## Third-Party Disclaimer

Any disclosure of this report to a third-party is subject to this disclaimer. The report was prepared by EcoAct at the instruction of, and for use by, our client named on the front of the report. It does not in any way constitute advice to any third-party who is able to access it by any means. EcoAct excludes to the fullest extent lawfully permitted all liability whatsoever for any loss or damage howsoever arising from reliance on the contents of this report. We do not however exclude our liability (if any) for personal injury or death resulting from our negligence, for fraud or any other matter in relation to which we cannot legally exclude liability.



## Introduction

➤ **This report details Rubix Group's carbon footprint for the period from 1st January 2019 to 31st December 2019.**

Rubix identified all the activities and facilities for which it is responsible that generate greenhouse gases, using an operational approach. A data collection template was created by EcoAct and sent to relevant contacts across selected reporting companies for 2019. Data validation was carried out by EcoAct; in case of data gaps estimations were made based on the consumption patterns of the sites within the same country. Subsequently, extrapolations were made for the companies that data was not collected for. Companies were allocated and grouped into countries, when possible.

The calculation methodology is aligned with the GHG Protocol for Corporate Reporting and the Walker Guidelines. The GHG Protocol Standard (1) classifies emissions into 3 scopes, outlined below:

**Scope 1:** Direct Emissions: from greenhouse gas sources owned or controlled by the organisation

**Scope 2:** Energy Indirect Emissions: from the generation of imported electricity, heat or steam consumed by the organisation

**Scope 3:** Other Indirect Emissions: which are consequences of an organisation's activities but arise from sources that are owned or controlled by other organisations.

Rubix currently reports its Scope 1, Scope 2 and selected Scope 3 emissions. In this report, Scope 3 will include emissions from grey fleet, and the transmission and distribution (T&D) (2) emissions and the Well-to-tank (WTT) (3) emissions associated with the fuels consumed directly by the organisation.

In this report, emissions are reported in tonnes of carbon dioxide equivalent (tCO<sub>2</sub>e) which is a standard unit used to compare the global warming effect of all six of the 'Kyoto' greenhouse gases: Carbon Dioxide (CO<sub>2</sub>), Methane (CH<sub>4</sub>), Nitrous Oxide (N<sub>2</sub>O), Hydrofluorocarbons (HFC), Perfluorocarbons (PFC) and Sulphur Hexafluoride (SF<sub>6</sub>).

The carbon footprint calculations use the UK Government emission conversion factors for greenhouse gas company reporting (2019) and IEA data from the CO<sub>2</sub> Emissions from Fuel Combustion dataset, (2019) © OECD/IEA 2019, [www.iea.org/statistics](http://www.iea.org/statistics). Licence: [www.iea.org/t&c](http://www.iea.org/t&c); as modified by EcoAct.

➤ **Detailed report**

Please click [here](#) to read the full report.

(1) <https://ghgprotocol.org/corporate-standard>

(2) T&D: The transmission and distribution (T&D) emissions are associated with grid losses (the energy loss that occurs in getting the electricity from the power plant to the organisations that purchase it).

(3) WTT: The Well-to-tank (WTT) emissions are upstream Scope 3 emissions associated with the extraction, refining and transportation of the raw fuel sources to an organisation's site (or asset), prior to combustion.



## Analysis

### 1. Results

➤ **The results show that total gross GHG emissions in the reporting period (2019) were 35,442 tCO<sub>2</sub>e, attributable as follows:**

Direct Emissions	(Scope 1)	21,103 tCO <sub>2</sub> e or 60% of total emissions
Indirect Emissions	(Scope 2)	5,381 tCO <sub>2</sub> e or 15% of total emissions
Indirect Other Emissions	(Scope 3)	8,958 tCO <sub>2</sub> e or 25% of total emissions

Table 1: Emissions by activity and scope

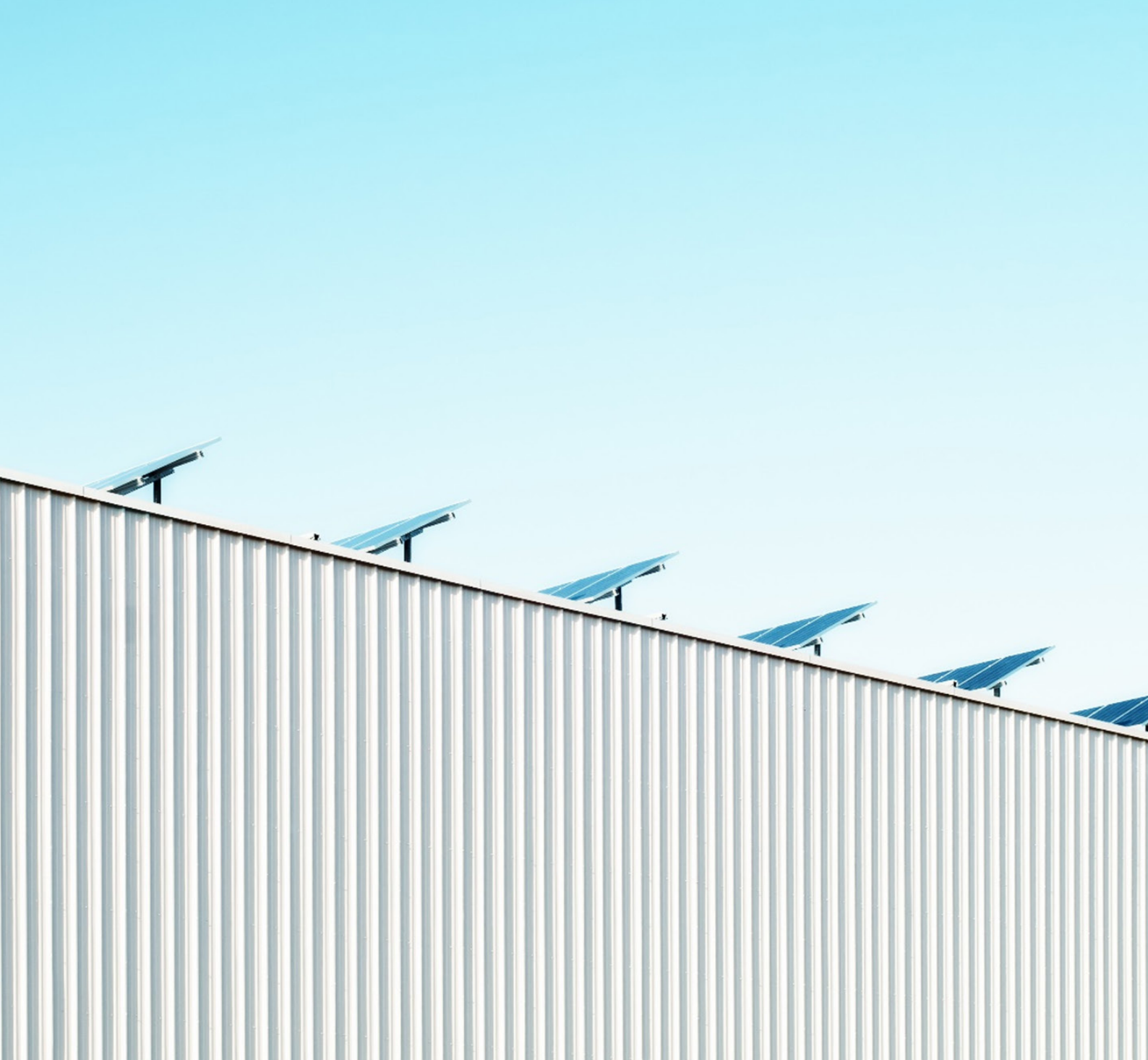
Type of Emissions	Activity	Total Rubix Global 2019		
		Activity units (kWh)	tCO <sub>2</sub> e	% of Total
Direct (Scope 1)	Natural Gas	42,398,644	7,795	22.0%
	Fuel Oil	217,861	58	0.2%
	Gas Oil	32,179	8	0.02%
	Heating Oil	551,482	136	0.4%
	Diesel	51,562,696	12,613	35.6%
	Petrol	2,104,708	492	1.4%
	<b>Subtotal (Scope 1)</b>		<b>96,867,569</b>	<b>21,103</b>
Indirect Energy (Scope 2)	Purchased Electricity (kWh)	20,292,767	5,181	14.6%
	District Heating (kWh)	1,134,873	200	0.6%
	<b>Subtotal (Scope 2)</b>	<b>21,427,640</b>	<b>5,381</b>	<b>15%</b>
<b>TOTAL Scope 1 &amp; 2</b>		<b>118,295,209</b>	<b>26,484</b>	<b>75%</b>
Indirect Other (Scope 3)	Additional Upstream Activities			
	<i>Transmission &amp; Distribution</i>	21,427,640	335	1%
	<i>Well to Tank</i>	118,295,209	5,057	14%
	<i>Well to Tank Transmission &amp; Distribution</i>	21,427,640	184	1%
	Subtotal T&D and WTT		5,576	15.7%
	Grey Fleet			
	<i>Diesel</i>	12,425,832	3,040	9%
	<i>Petrol</i>	1,464,316	342	1%
	Subtotal Grey Fleet	13,890,148	3,382	9.5%
	<b>Subtotal (Scope 3)</b>		<b>8,958</b>	<b>25%</b>
<b>TOTAL EMISSIONS (tCO<sub>2</sub>e)</b>			<b>35,442</b>	<b>100%</b>

## 2. Year-on-Year Analysis

Table 2 below shows a comparison of the year-to-year changes in emissions for Scope 1 and Scope 2 categories:

Table 2: Comparative activity (kWh) and emissions (tCO<sub>2</sub>e)

Type of Emissions	Activity	Activity units (kWh)		YOY %	tCO <sub>2</sub> e		YOY %
		Total Rubix Global 2018 kWh	Total Rubix Global 2019 kWh		Total Rubix Global 2018 tCO <sub>2</sub> e	Total Rubix Global 2019 tCO <sub>2</sub> e	
Direct (Scope 1)	Natural Gas	41,358,636	42,398,644	3%	7,608	7,795	2%
	Fuel Oil	732,450	217,861	-70%	197	58	-70%
	Gas Oil	1,490,745	32,179	-98%	412	8	-98%
	LPG	71,588	0	-100%	15	0	-100%
	Heating Oil	0	551,482		0	136	
	Diesel	56,927,845	51,562,696	-9%	14,100	12,613	-11%
	Petrol	3,690,043	2,104,708	-43%	863	492	-43%
	<b>Subtotal (Scope 1)</b>	<b>104,271,307</b>	<b>96,867,569</b>	<b>-7%</b>	<b>23,195</b>	<b>21,103</b>	<b>-9%</b>
Indirect Energy (Scope 2)	Purchased Electricity (kWh)	24,595,760	20,292,767	-17%	6,835	5,181	-24%
	District Heating (kWh)	2,198,722	1,134,873	-48%	433	200	-54%
	<b>Subtotal (Scope 2)</b>	<b>26,794,481</b>	<b>21,427,640</b>	<b>-20%</b>	<b>7,269</b>	<b>5,381</b>	<b>-26%</b>
<b>TOTAL Scope 1 &amp; 2</b>		<b>131,065,788</b>	<b>118,295,209</b>	<b>-10%</b>	<b>30,463</b>	<b>26,484</b>	<b>-13%</b>
Indirect Other (Scope 3)	Additional Upstream Activities						
	<i>Transmission &amp; Distribution</i>	26,794,481	21,427,640	-20%	306	335	10%
	<i>Well to Tank</i>	131,065,788	118,295,209	-10%	5,853	5,057	-14%
	<i>Well to Tank Transmission &amp; Distribution</i>	26,794,481	21,427,640	-20%	214	184	-14%
	<b>Subtotal T&amp;D and WTT</b>				<b>6,373</b>	<b>5,576</b>	<b>-13%</b>
	Grey Fleet						
	<i>Diesel</i>	0	12,425,832		0	3,040	
	<i>Petrol</i>	0	1,464,316		0	342	
	<b>Subtotal Grey Fleet</b>					<b>3,382</b>	
<b>Subtotal (Scope 3)</b>				<b>6,373</b>	<b>8,958</b>	<b>41%</b>	
<b>TOTAL EMISSIONS (tCO<sub>2</sub>e)</b>					<b>36,836</b>	<b>35,442</b>	<b>-4%</b>



**EcoAct UK**

+44 (0) 203 589 9444  
ukoffice@eco-act.com

**EcoAct USA**

+1 646 757 8174  
usaoffice@eco-act.com

**EcoAct Spain**

+34 935 851 122  
contacta@eco-act.com

**EcoAct France**

+ 33 (0) 1 83 64 08 70  
contact@eco-act.com

**EcoAct Kenya**

+254 721 922 135  
kenyaoffice@eco-act.com

EcoAct is an international advisory consultancy and project developer that works with clients to help them succeed in their climate ambitions. We work with many large and complex multinational organisations to offer solutions to their sustainability challenges.

We believe that climate change, energy management and sustainability are drivers of corporate performance and we seek to address business or organisational problems and opportunities in an intelligent way.